



# INDOFINE Chemical Company, Inc.

121 Stryker Lane, Bldg. 30, Suite 1 • Hillsborough, NJ 08844 • U.S.A.

Phone: (908) 359-6778 • FAX: (908) 359-1179

website: [www.indofinechemical.com](http://www.indofinechemical.com)

e-mail: [chemical@indofinechemical.com](mailto:chemical@indofinechemical.com)

## CERTIFICATE OF ANALYSIS

Catalog Number: 020981S

Product Name: EPIGALLOCATECHIN GALLATE with HPLC

CAS Number: [989-51-5]

Lot Number: 1403437

Chemical Formula: C<sub>22</sub>H<sub>18</sub>O<sub>11</sub>

Molecular Weight: 458.37

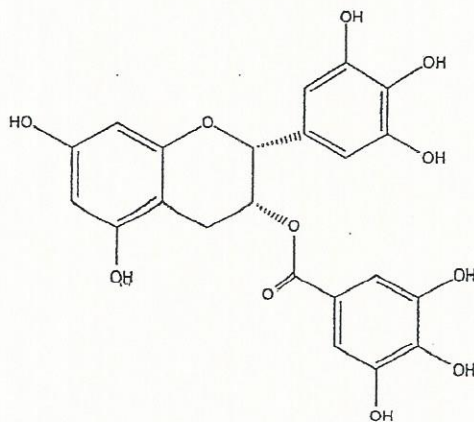
Appearance: Off-white powder

Botanical Source: Green tea

Loss on drying: 1.3%

Storage: Store in a cool, dry place. Protect from light.  
Store at 2-8°C

Purity(HPLC): 99.52%





# INDOFINE Chemical Company, Inc.

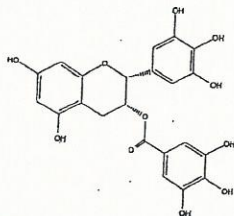
121 Stryker Lane, Bldg. 30, Suite 1 • Hillsborough, NJ 08844 • U.S.A.

Phone: (908) 359-6778 • FAX: (908) 359-1179

website: [www.indofinechemical.com](http://www.indofinechemical.com)

e-mail: [chemical@indofinechemical.com](mailto:chemical@indofinechemical.com)

## HPLC ANALYSIS

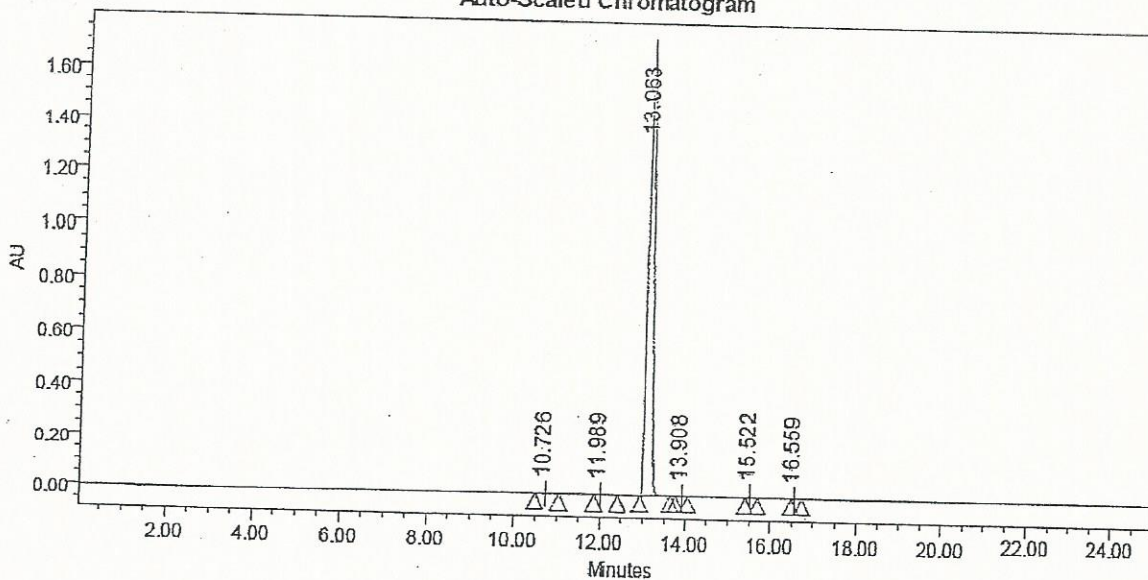


Catalog No.: 020981S  
Product Name: Epigallocatechin gallate  
Lot No.: 1403437

### SAMPLE INFORMATION

Sample Name:	Epigallocatechin gallate	Acquired By:	System
Sample Type:	Unknown	Sample Set Name:	
Vial:	1:B,8	Acq. Method Set:	Epigallocatechin gallate
Injection #:	2	Processing Method:	QC
Injection Volume:	20.00 ul	Channel Name:	275.0nm
Run Time:	25.0 Minutes	Proc. Chnl. Descr.:	PDA 275.0 nm

Auto-Scaled Chromatogram



Peak Results

Name	RT	Area	% Area	USP Plate Count	USP Resolution
1	10.726	5438	0.04	24863.47	
2	11.989	3776	0.03	33790.60	2.78
3	13.063	14476452	99.52	47870.94	2.47
4	13.908	2763	0.02	154870.69	4.42
5	15.522	55086	0.38	271848.89	12.03
6	16.559	2512	0.02	311119.42	8.52